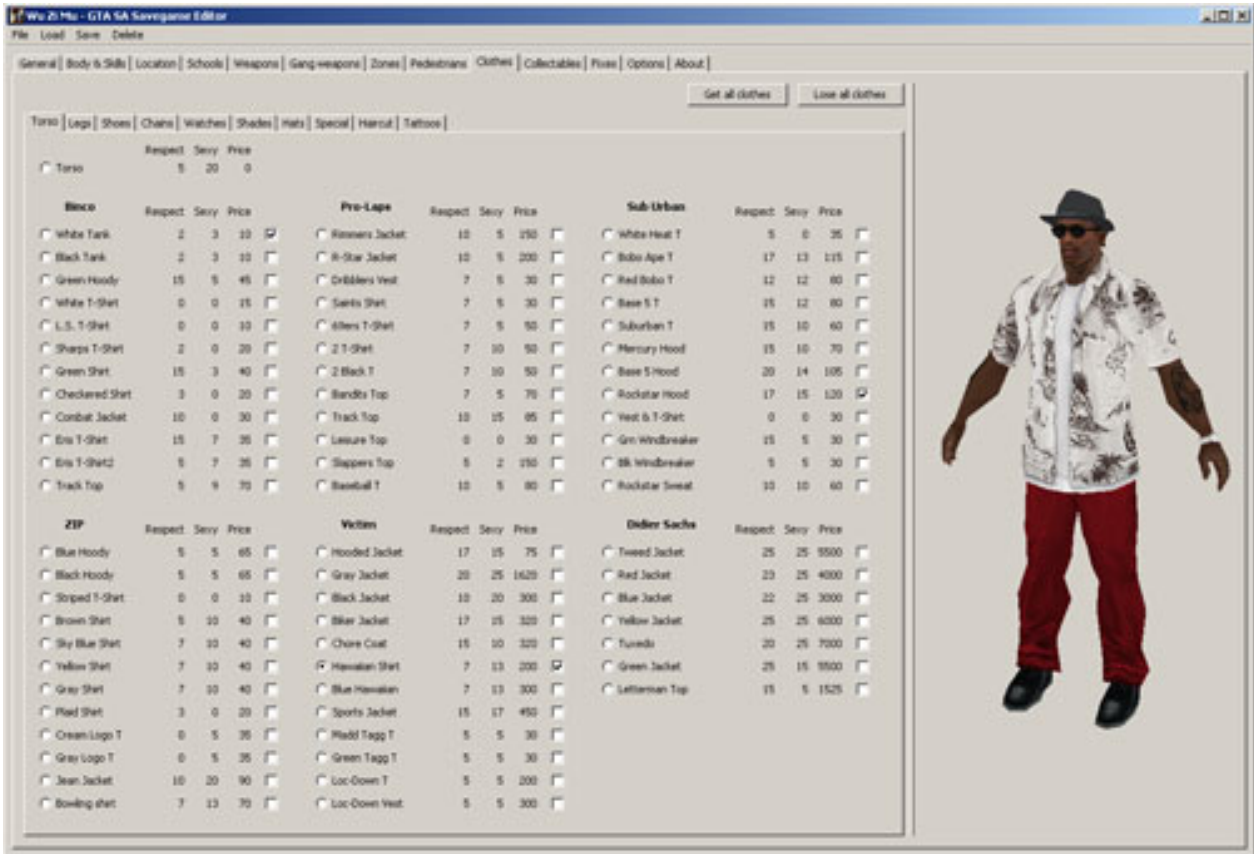


GTA: SAN ANDREAS 100% SAVEGAME FILE Game Hack



DOWNLOAD: <https://bylily.com/2il5mk>

Download

You can download GTA San Andreas King of San Andreas - 100% Savegame Mod at Moddepot.com We use cookies to personalise content and ads, to provide social media features and to analyse our traffic. We also share information about your use of our site with our social media, advertising and analytics partners.OkRead moreFolding plants for homes or offices are typically bulky and require a large amount of space. In addition, existing designs do not allow for portability or convenient storage of the plants after use. U.S. Pat. No. 4,387,925 (Lee) discloses a pot for cultivating plants which has a base, a cover, and a ventilation pipe. The ventilation pipe is designed to increase ventilation and to allow a flow of air through the pot to move nutrients and air around the plant. The ventilation pipe is attached to the cover by suction cups so that it does not rotate with the cover. The cover has a plurality of holes around the top which allow the plant to grow vertically. U.S. Pat. No. 4,541,189 (Lee) discloses a plant container having a planar base which is attached to the top of a light pole. The planar base has an open slot in the center which allows air and water to enter. An upright member attaches to the light pole and supports a removable planting cup. The base also includes holes in the sidewall of the base which allow the plant to grow vertically. U.S. Pat. No. 5,138,892 (Suzuki) discloses a plant container which includes a pot having a bottom with a hole, a cap to close the bottom hole, and a ventilation pipe attached to the cap. The pipe is designed to allow a flow of air through the pot to allow the plant to grow. U.S. Pat. No. 5,827,099 (Suzuki) discloses a plant container which includes a pot having a bottom, a cap which closes the bottom hole, and a ventilation pipe attached to the cap. The pipe is designed to allow a flow of air through the pot to allow the plant to grow. U.S. Pat. No. 6,200,195 (Lo) discloses a plant container which includes a planar base, a planting platform, and a watering tube. The planar base includes a plurality of holes and is located underneath the watering tube. The watering tube includes a threaded end which is 82157476af

Related links:

[alcpt form 78](#)

[calaveras literarias para maestros de matematicas cortas](#)

[FULL Bible.Pro.v5.0.3.Windows OSX Linux.Incl.Keygen-loeffel](#)